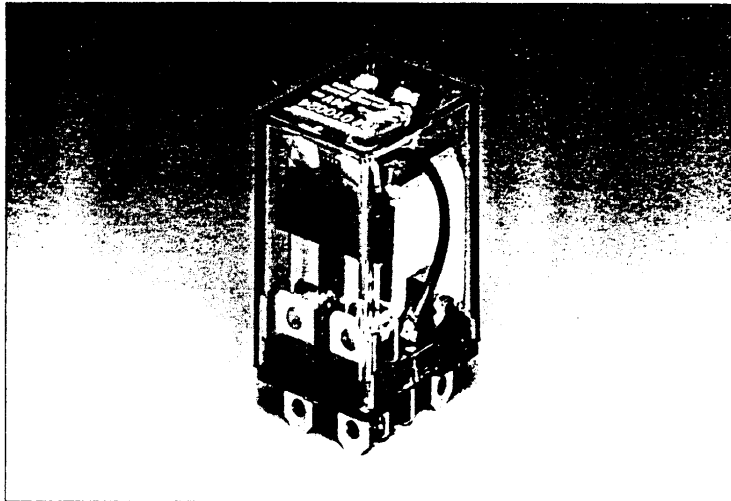


625 686

# TM Miniature Power Relay

## 2pole 10 A



- 2 C/O contacts
- Continuous current rating 10 A  
240 VAC/28 VDC
- Rugged construction and compact size
- Plug-in, solder tags & PC board versions
- For applications in control panels, office machines, air conditions, automation systems, power station control equipment

### Contacts

Configuration		2 C/O
Type of contact		single contact
Rated voltage		240 VAC / 28 VDC
Rated current	A	10
Make current	A	15
Rated breaking capacity	VA	2400
Contact material		AgCdO

### Coil Data

Nominal voltage	VDC/VAC	12...60/12...230
Nominal coil power	W/VA	0.9/1.2
For additional information		refer to coil data

**TM**

### General Data

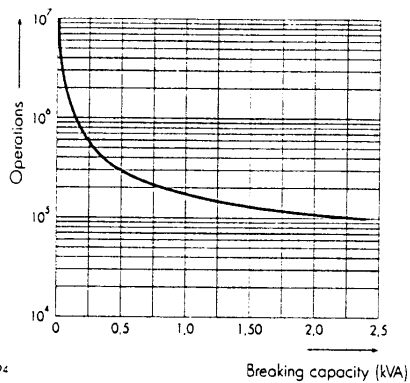
Mechanical life	ops	>10 x 10 <sup>6</sup>	
Maximum switching rate	mechanical	18000	
	at rated load	1800	
Pull-in/Drop-out/Bounce time N/O / N/C	appr. ms	10/5/1/3	
Dielectric strength	coil-contact	VAC	1500
	contact-contact	VAC	1500
	pole-pole	VAC	1500
Creepage/Clearance coil-contact	mm	>1.2/1.2	
Ambient temperature	°C	-25...+50	
Vibration resistance (30...500 Hz)	g	>5	
Shock resistance	Operation	g	>20
	Damage	g	>100
Soldering time	max. s	5	
Soldering bath temperature	max. °C	260	

**SCHRACK**

# TM Miniature Power Relay

## 2pole 10 A

**Contact Life**  
for resistive AC load\*

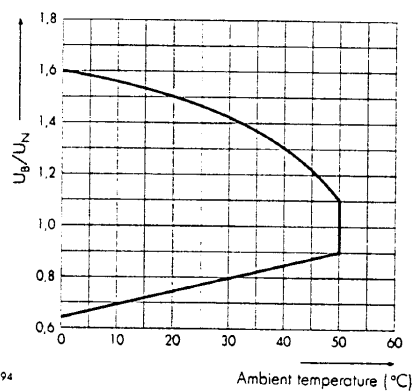


x 0650694

Breaking capacity (kVA)

\* Reduction factor for inductive load: please refer to Relay Glossary for details

**Coil Operating Range for DC Coil**



x 0650694

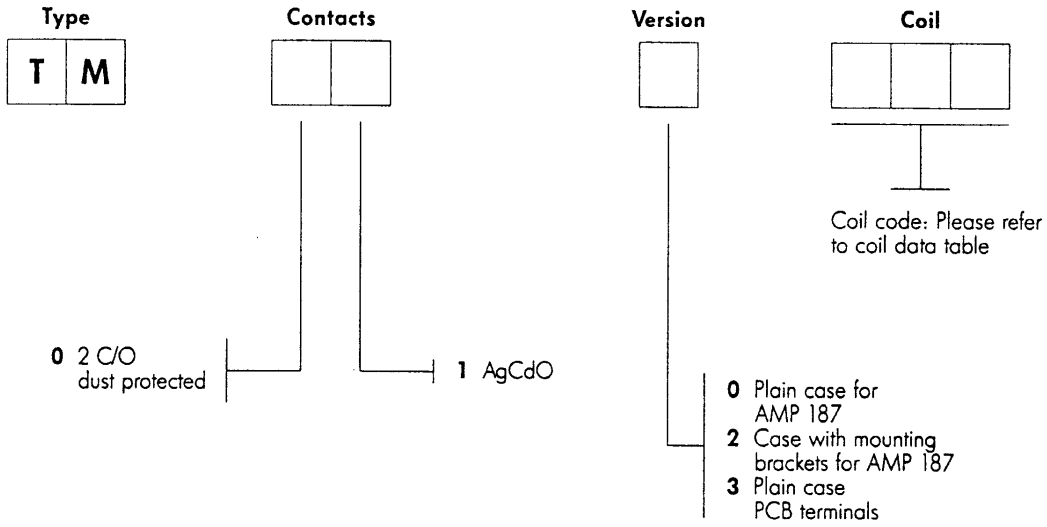
Ambient temperature (°C)

TM

# TM Miniature Power Relay

## 2pole 10 A

### Ordering Key



Technical data of approved types on request

### Coil Data (DC coil)

Coil code	Nominal voltage	Pull-in voltage	Drop-out voltage	Coil current	Coil resistance
	VDC	VDC	VDC	mA	Ω
012	12	9.0	1.2	75.0	160±10%
024	24	18.0	2.4	37.2	650±10%
048	48	36.0	4.8	18.5	2600±10%
060	60	45.0	6.0	15.0	4000±10%

### Coil Data (AC coil)

Coil code	Nominal voltage	Pull-in voltage	Drop-out voltage	Coil current	Coil resistance
	VAC	VAC	VAC	mA	Ω
512	12	10.2	3.6	101.7	40±10%
524	24	20.4	7.2	50.0	160±10%
548	48	40.8	14.4	25.4	640±10%
615	115	97.8	34.5	10.5	3400±10%
730	230	195.5	69.0	5.3	13600±10%

**M**

# TM Miniature Power Relay

## 2pole 10 A

**Dimensions**

Technical drawings showing dimensions in mm (inch):

- Side view (left): Total width 27.5 (1.083), distance from left edge to first pin 5.0 (0.197), distance between pins 0.6 (0.024), total height 41.7 (1.640), distance from top edge to top of pins 35.2 (1.386).
- Side view (right): Total width 21.6 (0.850), distance from left edge to first pin 0.6 (0.024), distance between pins 3.0 (0.118), distance from top edge to top of pins 2.0 (0.078). Label: "Case with mounting brackets".
- Top view: Total width 38.0 (1.496), total height 44.0 (1.732), distance from top edge to top of pins 3.5 (0.138).

M 0620694

**Connections**

Circuit diagram showing connections:

- Terminal 7 is connected to terminal 5.
- Terminal 8 is connected to terminal 6.
- Terminal 3 is connected to terminal 1.
- Terminal 4 is connected to terminal 2.

S 0300694

View on solder pins  
All dimensions in mm (inch)

**P.C. Lay-out**

PC layout diagram showing dimensions in mm (inch):

- Grid pitch: 2.54 (0.100)
- Pin diameter: 8 x 2.5 (0.098) Dia
- Pin spacing: 14.2 (0.559)
- Pin diameter: 7.0 (0.276)
- Pin diameter: 6.0 (0.236)
- Pin diameter: 4.6 (0.181)
- Pin diameter: 4.0 (0.157)
- Pin diameter: 10.0 (0.394)

P 0320694

View on solder pins  
P.C. Grid Module T=2.54 (.100)

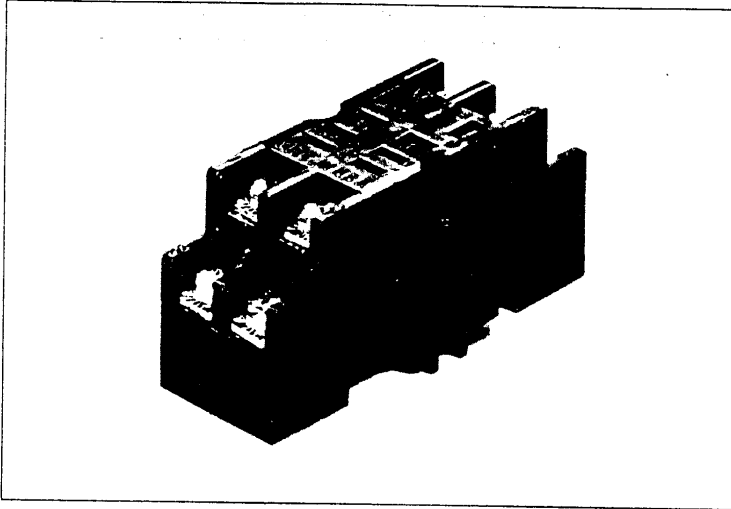
All dimensions in mm (inch)

**TM**

# TM Miniature Power Relay

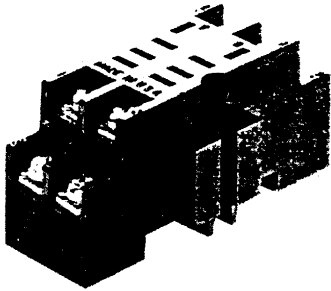
2pole 10 A

Accessories

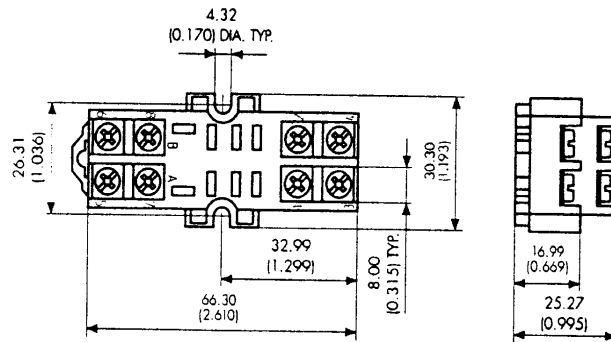


## TM 78 700

DIN rail relay socket with screw-type terminals



Retaining clip **TM 28 800**



M 0630694

TM

**SCHRACK**